

ABSOLUTE CONCRETE

Culvert Pipes

For over 30 years Absolute Concrete has been producing Spun Rubber Ring Joint (RRJ) concrete pipes from our yard in Kaiwaka. Our concrete pipes continue to perform in a wide range of New Zealand conditions including, underneath highways and marine applications.

Product Description

Spun concrete pipes at Absolute Concrete are currently manufactured using the centrifugal spinning process which, by its very nature generates compaction forces up to 100x gravitational force. This passive compaction acts to reduce reinforcing cage stresses and ensures close contact between the concrete and the steel cage thus eliminating voids creating a very strong product.

Features

Once spun Absolute Concrete pipes are then steam cured inside their steel moulds eliminating stresses within the uncured pipe and ensuring the integrity and durability of the pipe structure.

Because of the method of manufacture, resulting in a low water to cement ratio concrete and high compaction standards, Absolute Concrete is able to achieve a durable and strong product across a range of sizes to suit your needs.



Manufacturing standards

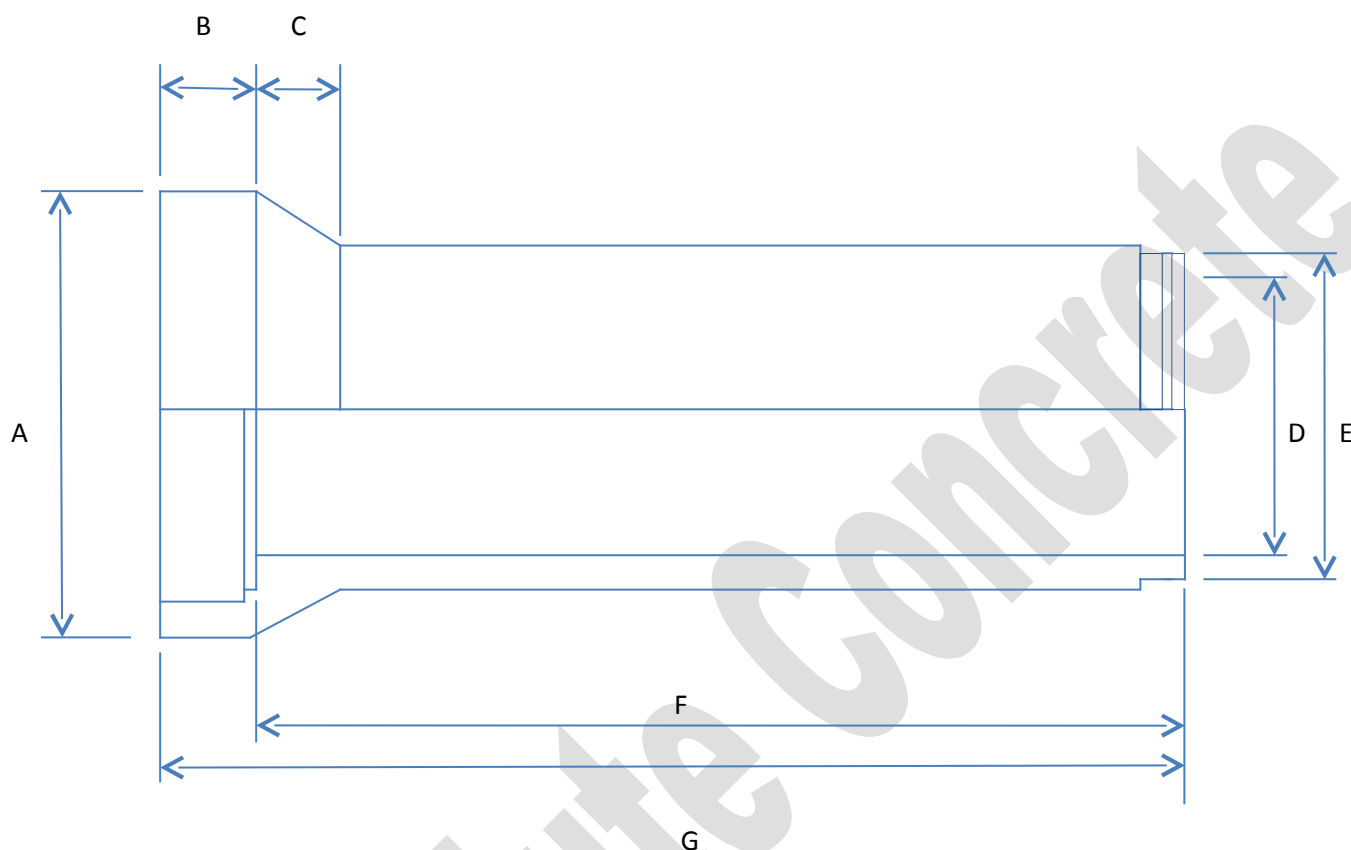
Absolute Concrete Spun RRJ pipes are designed and manufactured to comply with the requirements of AS/NZS4058.

Testing

Routine factory tests such as load testing, water tightness and absorption are carried out on randomly selected pipes to ensure compliance with the requirements of AS/NZS4058.

ABSOLUTE CONCRETE

Culvert Pipe Dimensions



Diameter		225	300	375	450	500	600	750	900
Collar Diameter	A	370	450	540	640	710	820	1000	1200
Collar Length	B	67	77	80	115	135	142	145	150
Bell Length	C	92	84	93	115	135	135	155	150
Inside Diameter	D	228	310	380	457	525	610	762	914
Spigot Diameter	E	282	367	444	534	600	699	864	1039
Effective length	F	1930	1923	1920	1885	1865	1855	1855	1850
Overall Length	G	2000	2000	2000	2000	2000	2000	2000	2000

